

**Agenzia del Territorio
CATASTO FABBRICATI
Ufficio Provinciale di
Alessandria**

Dichiarazione protocollo n. _____ del _____
Planimetria di u.i.u. in Comune di Acqui Terme
Piazzale Carlo Alberto civ. SNC

Identificativi Catastali:

Sezione:
Foglio: 35
Particella: 1019
Subalterno:

Compilata da:
Coppa Fabrizio

Iscritto all'albo:
Geometri

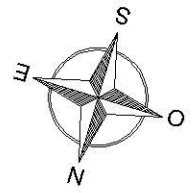
Prov. Alessandria

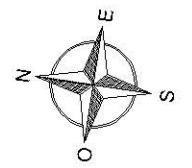
N. 1613

Scheda n. 1 Scala 1:500



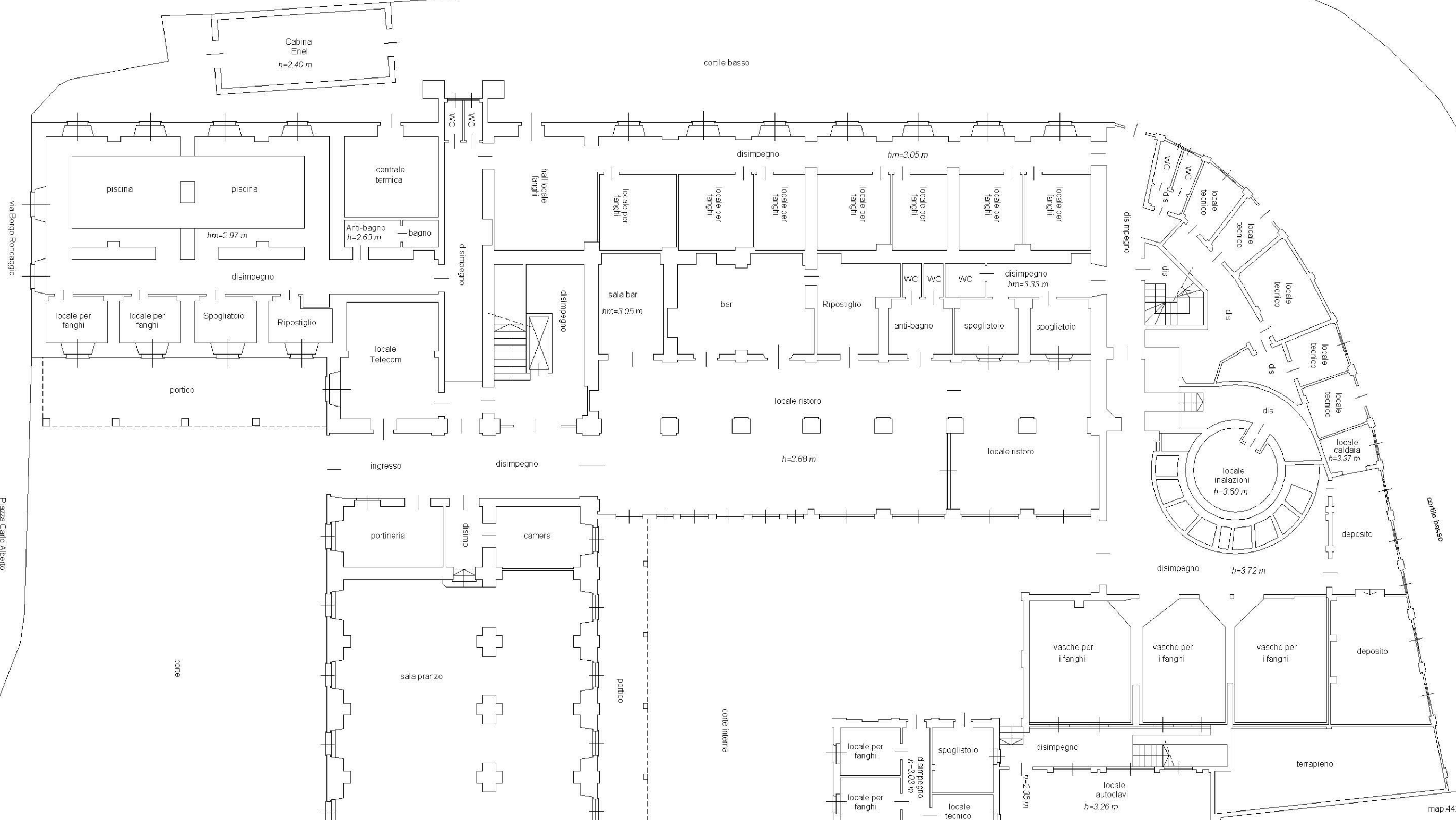
Pianta piano terra



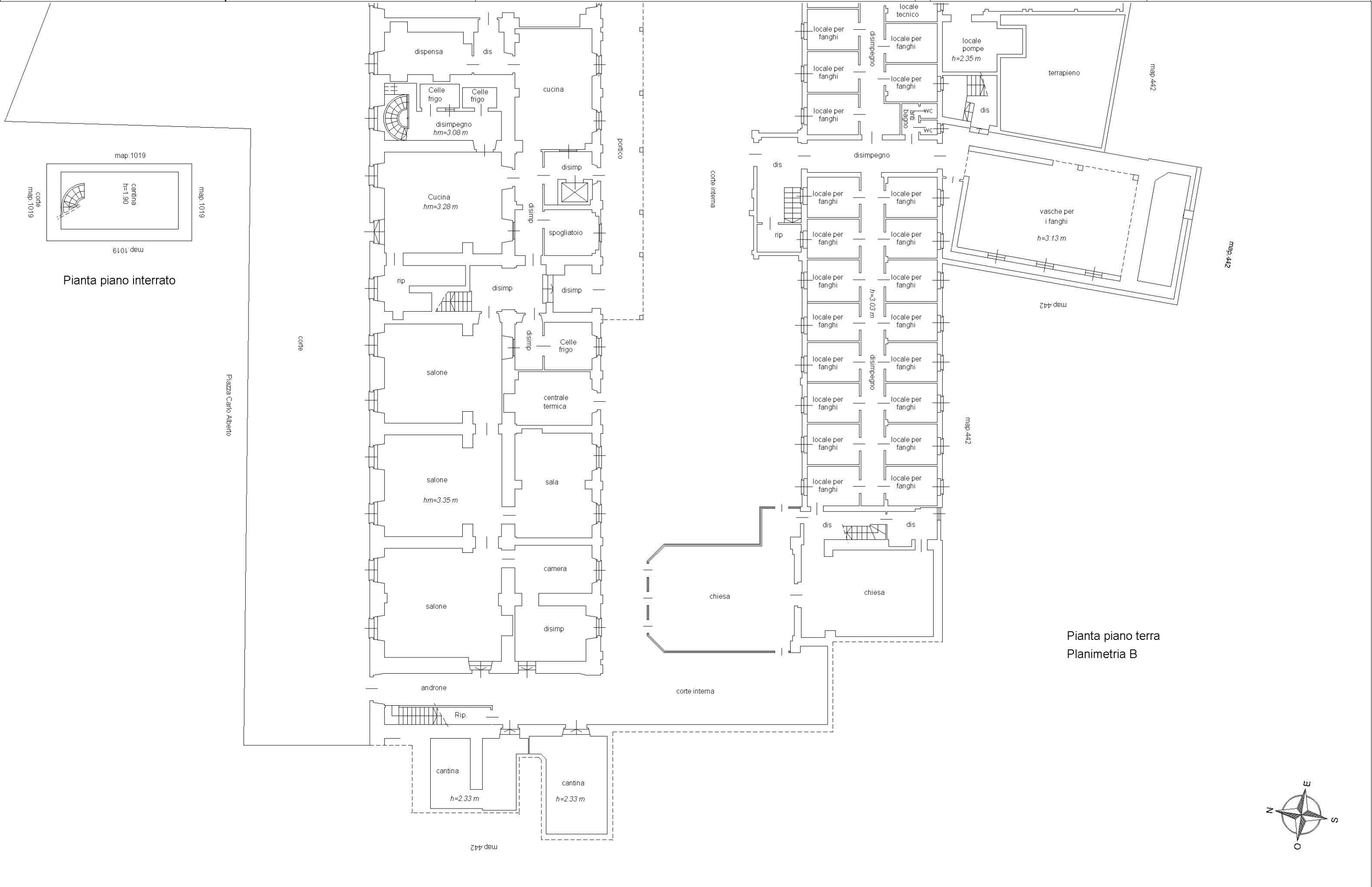


Pianta piano terra
 Planimetria A

map.442

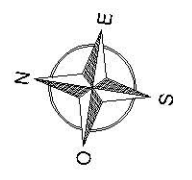


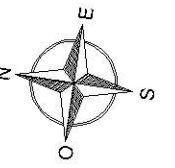
map.442



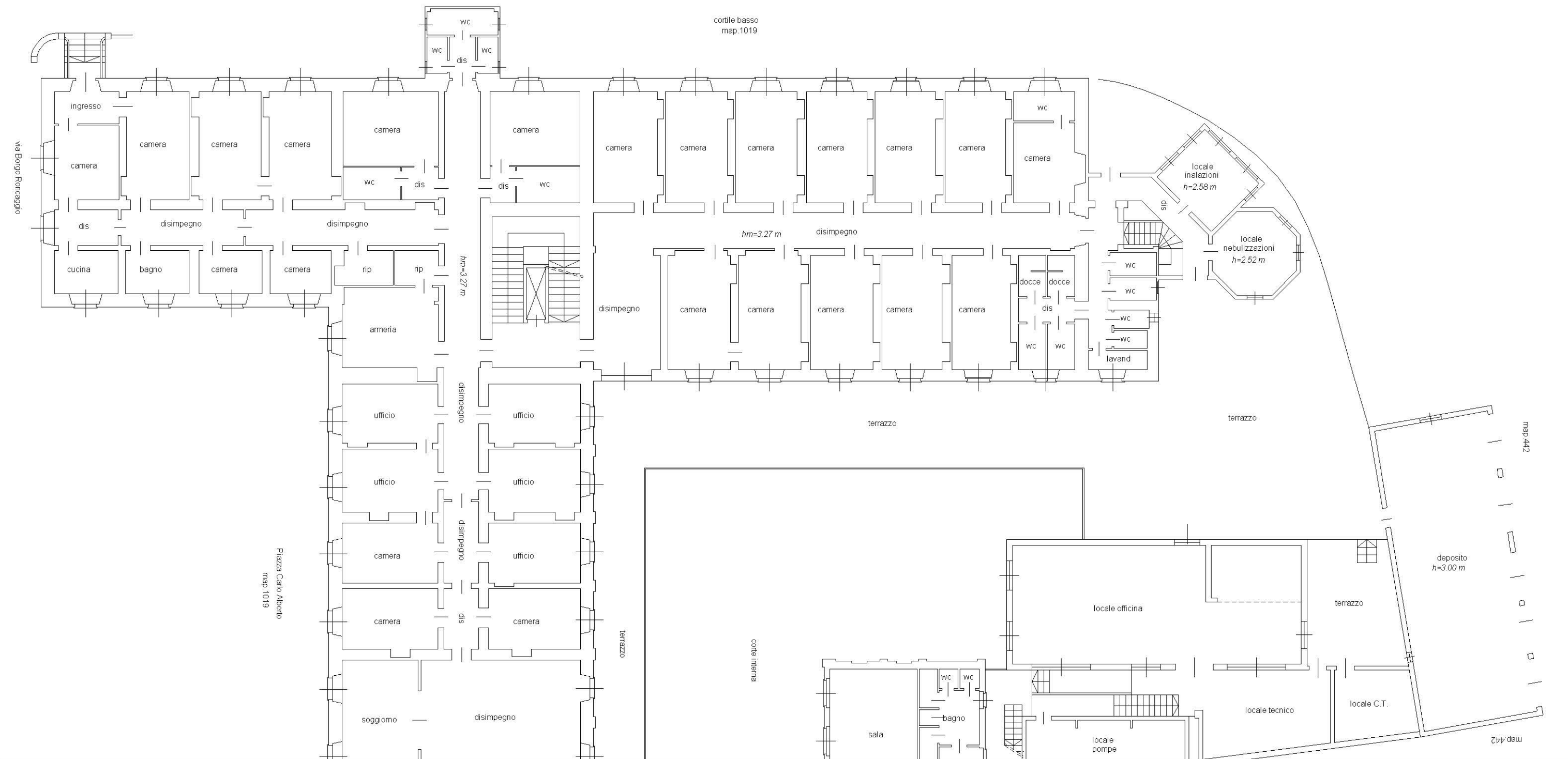
Pianta piano interrato

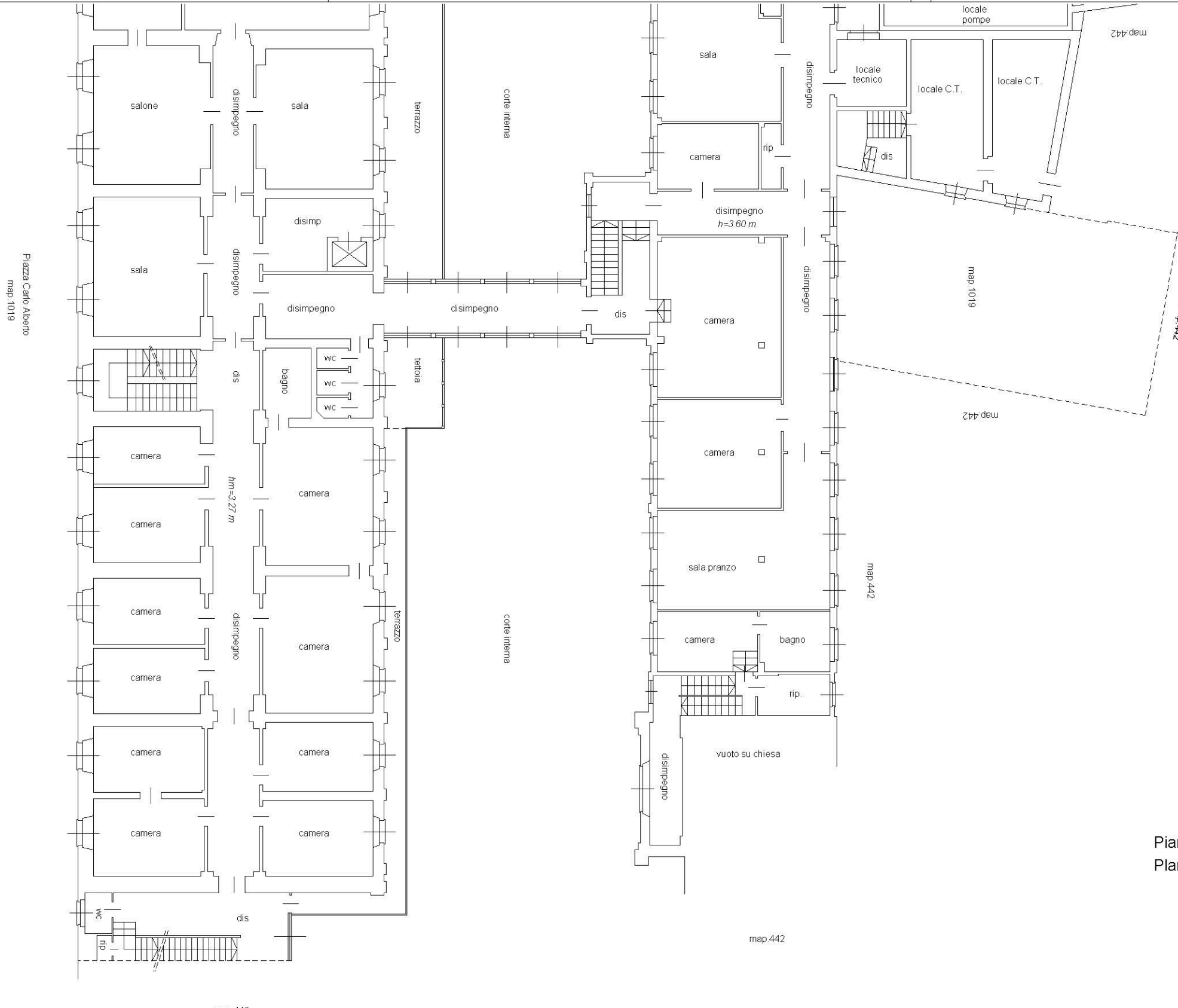
Pianta piano terra
 Planimetria B



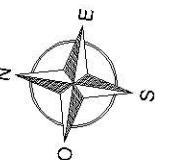


Pianta primo piano
Planimetria C

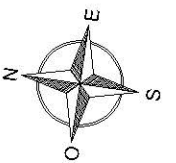


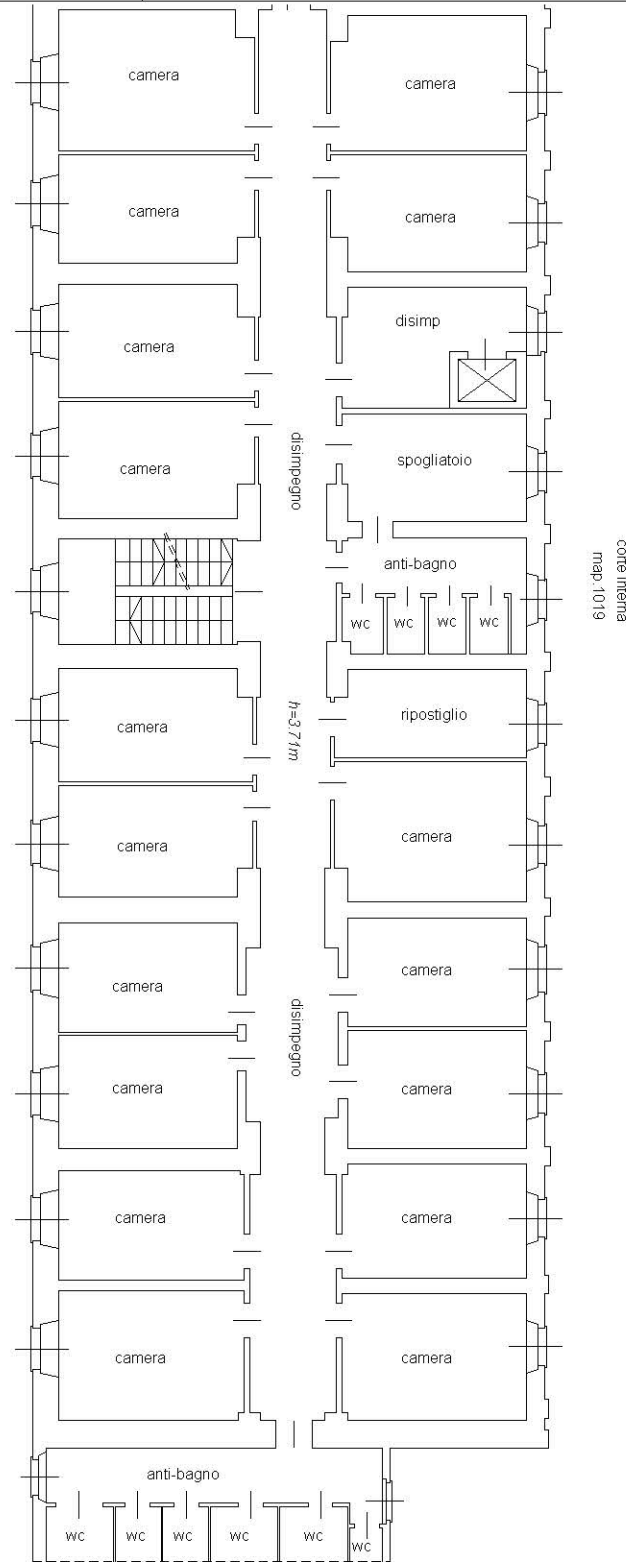


Pianta primo piano
Planimetria D



Pianta piano secondo
Planimetria E



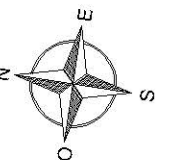


Piazzale Carlo Alberto
map. 1019

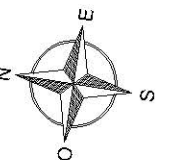
corte interna
map. 1019

map.442

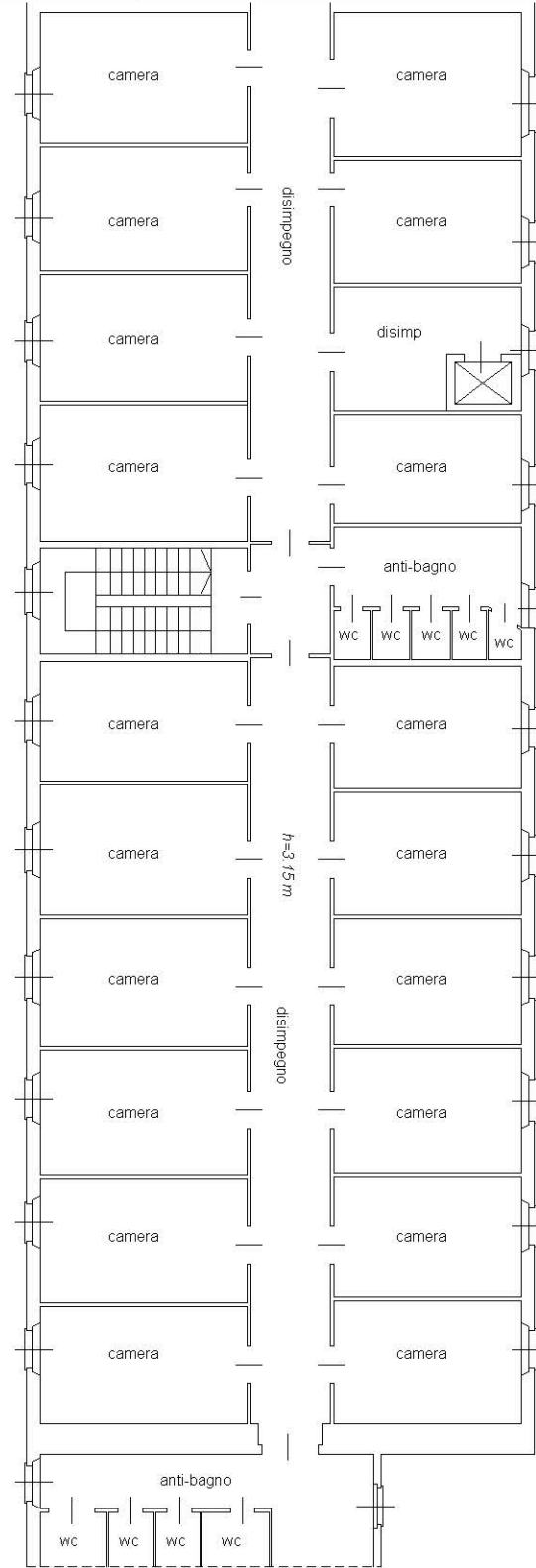
Pianta piano secondo
Planimetria F



Pianta piano terzo
h=3.15 m
Planimetria G

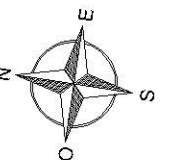


Piazza Carlo Alberto
map.1019



corte interna
map.1019

Pianta piano terzo
h=3.15 m
Planimetria H



Pianta piano quarto (sottotetto)
hm=1,80 m
Planimetria I

